

SPECTRA^{edge} Jet Cutters

Titan Division | Energetics



Hunting's **SPECTRA^{edge}** Jet Cutters were designed specifically for the mid-pressure (12,000 psi) Plug & Abandonment market.

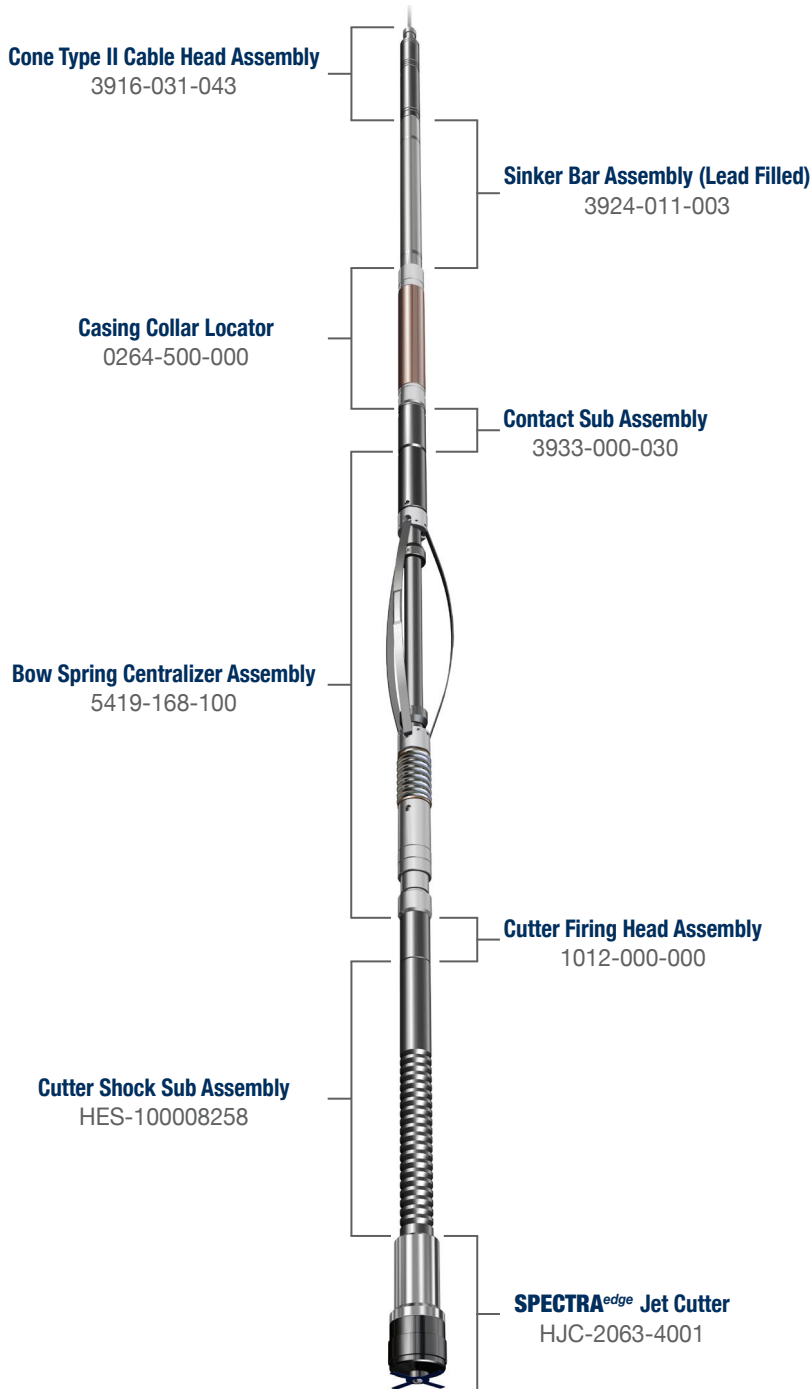
SPECTRA^{edge} Jet Cutters are the latest addition to Hunting's **SPECTRA[®]** family of Jet Cutters.

SPECTRA^{edge} Jet Cutters

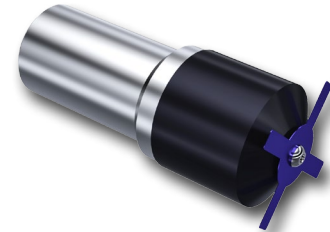
Jet Cutter Part Number	HJC-1680-4001	HJC-2063-4001	HJC-2500-4001
Specifications			
Cutter O.D. (in) [mm]	1-11/16 [43]	2-1/16 [52]	2-1/2 [64]
Pipe O.D. (in) [mm]	2-3/8 [60]	2-7/8 [68]	3-1/2 [89]
Pipe I.D. (in) [mm]	2.00-1.87 [51-47]	2.44-2.32 [62-59]	2.99-2.75 [76-70]
Weight (lb/ft) [kg/m]	4.70-5.80 [6.99-8.63]	6.50-7.90 [9.71-11.80]	9.30-12.95 [13.80-19.27]
Wall Thickness (in) [mm]	0.190-0.254 [4.83-6.45]	0.217-0.276 [5.51-7.01]	0.254-0.375 [6.45-9.52]
Cutter Type	Tubing	Tubing	Tubing
Environment			
Maximum Temperature (°F) [°C]	300 [149]	300 [149]	300 [149]
Maximum Pressure (psi) [MPa]	12,000 [83]	12,000 [83]	12,000 [83]
Hazard Class	1.4D	1.4D	1.4D
Mechanical			
Explosive Weight	13.6 g	16.6 g	28.6 g
Explosive Type	HMX	HMX	HMX
Thread Connection	1-3/16" GO Box	1-3/16" GO Box	1-3/16" GO Box

SPECTRA^{edge} utilizes Hunting's proven technology behind the **SPECTRA²** jet cutter to produce reliable and effective cuts across a broad range of pipe weights with minimal flare.

Hunting Provides the Complete Toolstring



SPECTRA Family - Jet Cutter Comparison


SPECTRA^{edge}

SPECTRA^{edge} Jet Cutter

Jet Cutter Part Number	HJC-2063-4001
Cutter O.D. (in) [mm]	2-1/16 [52]
Max. Temperature (°F) [°C]	300 [149]
Max. Pressure (psi) [MPa]	12,000 [83]
Explosive Weight	16.6 g


SPECTRA²

SPECTRA² Jet Cutter

Jet Cutter Part Number	SCP-2063T002	SCP-2063T002LP
Cutter O.D. (in) [mm]	2-1/16 [52]	2-1/16 [52]
Max. Temperature (°F) [°C]	400 [204]	400 [204]
Max. Pressure (psi) [MPa]	18,000 [124]	7,500 [52]
Explosive Weight	16.6 g	12.6 g

*Additional toolstring options are available.
For more information contact your Titan
Division sales representative today!
Or visit us at: www.hunting-intl.com/titan*

Contact Information

Sales
sales.titan@hunting-intl.com

Support
support.titan@hunting-intl.com

Perforating
Pampa, TX USA (806) 665-3781
Calgary, AB CAN (403) 543-4477

Instruments
Pampa, TX USA (806) 665-3781
Wichita Falls, TX USA (940) 691-1005
Houston, TX USA (713) 463-5881

Energetics
Milford, TX USA (972) 493-2580

Distribution
Hunting's distribution centers are strategically placed globally.
For more information, visit us at: www.hunting-intl.com/titan